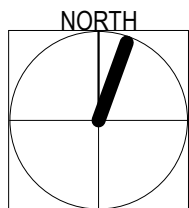
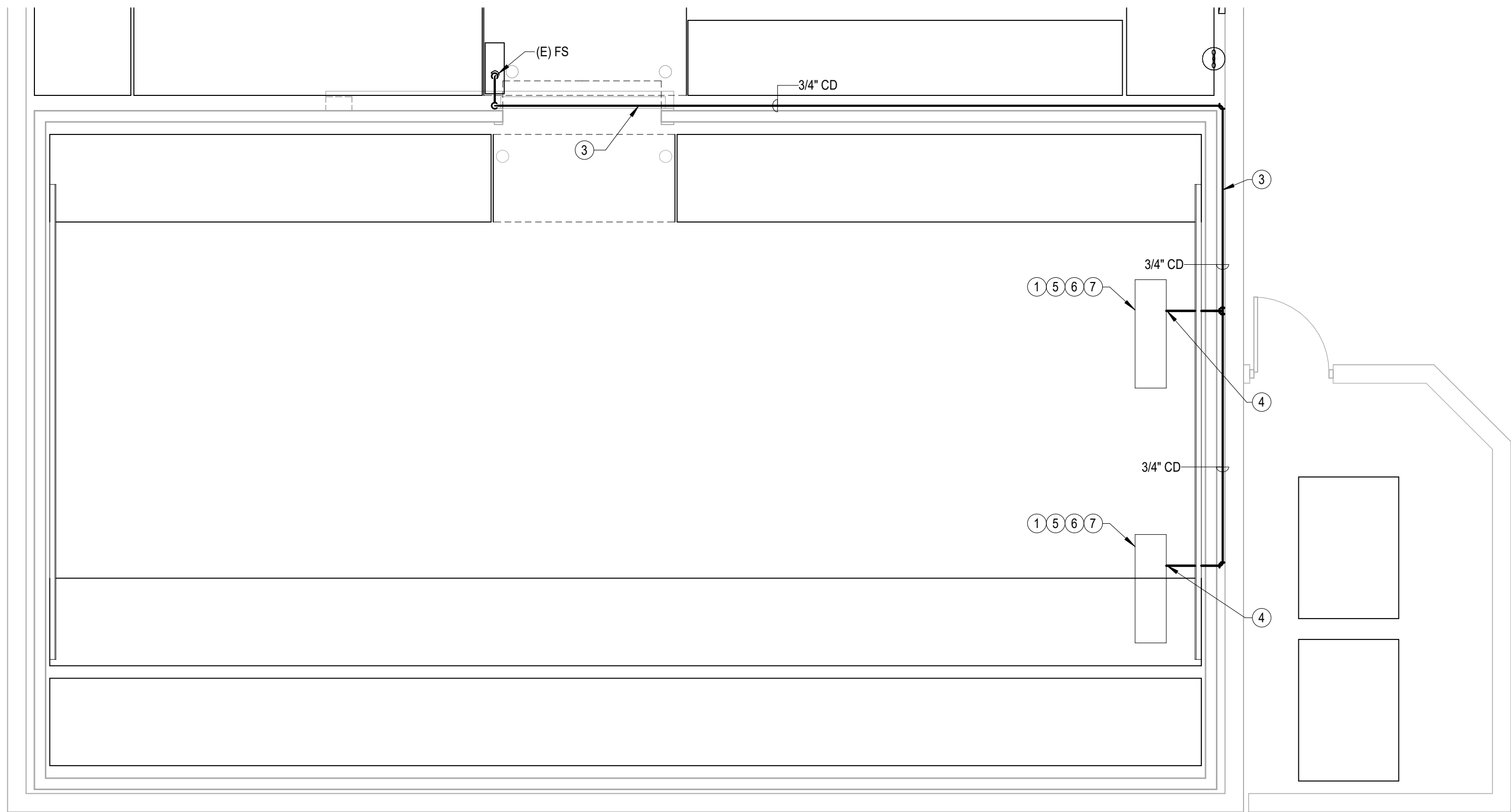


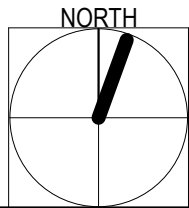
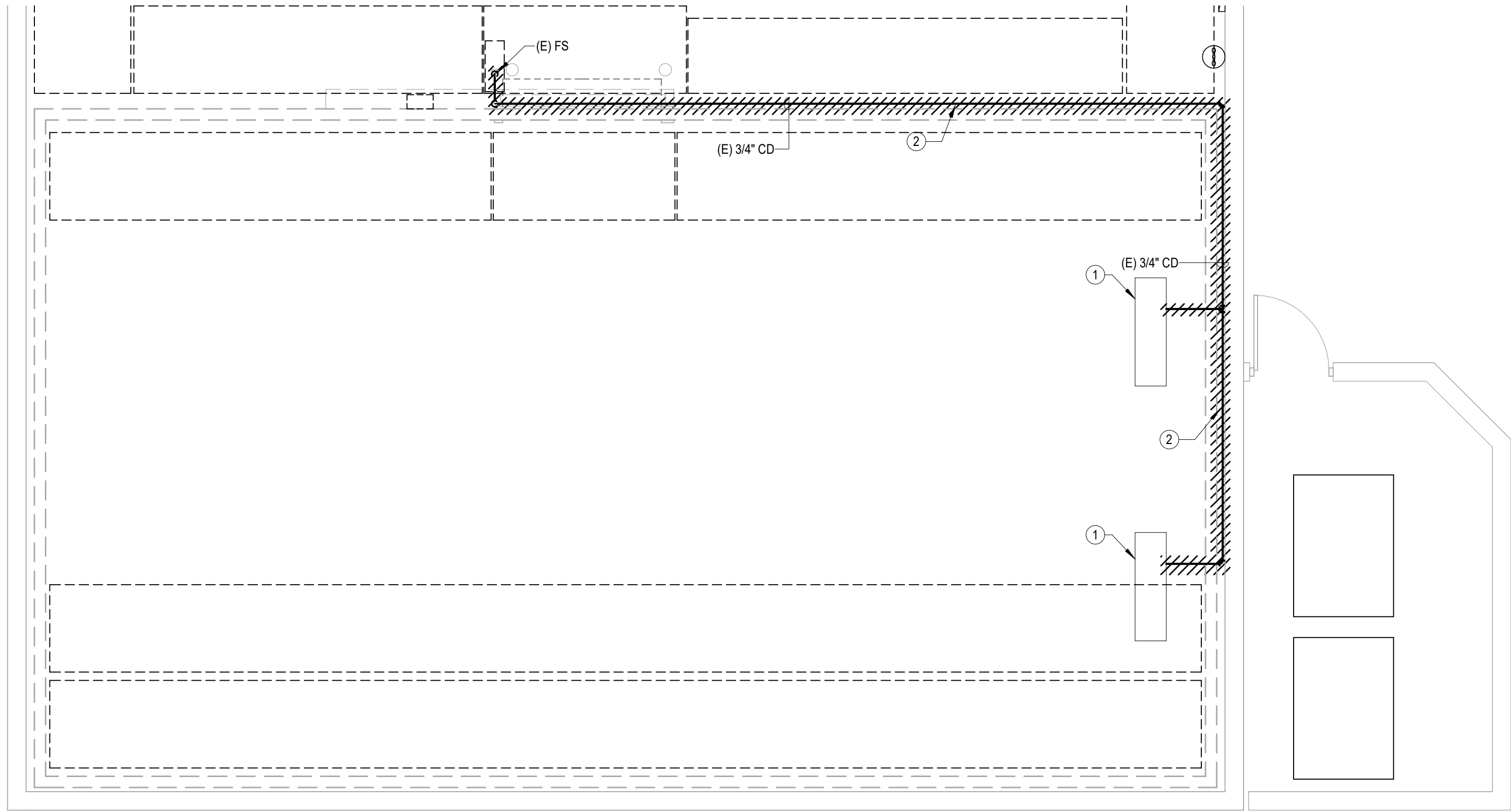
4/23/2025 2:27:35 PM Autodesk Docs\NSD Facilities - Freezer Replacement\NSD - Freezer Replacement\_Ping\_R25.vrt



PLUMBING NEW WORK PLAN

SCALE:  
1/4" = 1'-0"

2



PLUMBING DEMO PLAN

SCALE:  
1/4" = 1'-0"

1

GENERAL NOTES

- A. THESE DRAWINGS ARE TO BE CONSIDERED NOT FOR CONSTRUCTION UNTIL THEY ARE STAMPED, SIGNED AND PERMITTED. UNTIL THEN THEY ARE CONSIDERED SUBJECT TO CHANGE WITHOUT NOTICE.
- B. PROVIDE ACCESS AND CLEARANCE FOR MAINTENANCE FOR MECHANICAL AND PLUMBING EQUIPMENT AND COMPONENTS AS RECOMMENDED BY THE EQUIPMENT MANUFACTURER AND APPLICABLE CODE.
- C. COORDINATE WITH THE ARCHITECTURAL DRAWINGS FOR EXACT LOCATION OF PLUMBING FIXTURES AND DRAINS.
- D. DRAWINGS ARE BASED ON AS-BUILTS PROVIDED. CONTRACTOR SHALL FIELD VERIFY EXISTING CONDITIONS AND BRING ATTENTION TO ANY DISCREPANCIES THAT WILL IMPACT CONSTRUCTION TO THE EOR IN WRITING PRIOR TO CONTINUATION OF WORK.
- E. CONTRACTOR TO REPAIR ANY DAMAGE AS A RESULT OF DEMOLITION PLAN AT NO ADDED COSTS TO OWNER. USE ARCHITECTURAL DESIGN STANDARDS WHEN REPAIRING DAMAGE.

KEYNOTES

- #
1. FREEZER EQUIPMENT SHOWN FOR REFERENCE ONLY.
2. DEMO (E) 3/4" CONDENSATE DRAIN FROM FREEZER FAN COILS TO (E) FLOOR SINK.
3. ROUTE 3/4" CONDENSATE TO (E) FLOOR SINK.
4. PROVIDE CONDENSATE TRAP, PER DETAIL 11P-001.
5. FOOD SERVICE CONTRACTOR TO PROVIDE FINAL CONNECTION TO NEW EVAPORATORS.
6. CONTRACTOR TO FIELD VERIFY REFRIGERANT LINE SIZES AND ENSURE COMPATIBILITY WITH NEW EVAPORATORS PRIOR TO INSTALLATION.
7. CONTRACTOR TO MAKE FINAL REFRIGERANT LINE CONNECTION TO NEW EVAPORATORS.

PREPARED FOR THE

BOARD OF EDUCATION  
NATIONAL SCHOOL DISTRICT  
NATIONAL CITY, CALIFORNIA

PREPARED BY

**SGPA** ARCHITECTURE  
AND PLANNING

PLUMBING FLOOR PLANS

**CENTRAL  
WAREHOUSE**  
FREEZER REPLACEMENT  
1400 N AVENUE  
NATIONAL CITY, CA 91950

SUBMITTALS / REVISIONS		
#	ISSUE	DATE
1	DSA SUBMITTAL V1	03/19/2025
2	DSA BACKCHECK	04/30/2025

**BID SET 5/1/2025  
NOT FOR  
CONSTRUCTION  
PROJECT STILL IN  
REVIEW**

PROJECT NO. 22439-E-02

SHEET NO.

P-201



5160 Carroll Canyon Rd, Suite 200  
San Diego, California 92121  
Consulting Engineers  
T 658 200-0030  
F 658 200-0037  
www.ma-engr.com

©SGPA 2024

DSA

CONSULTANT

STAMP